

: 2020.07.20

: 2020.07.20



1.

- 1) 가
- 가) 가
-) 가
-) 가 ()

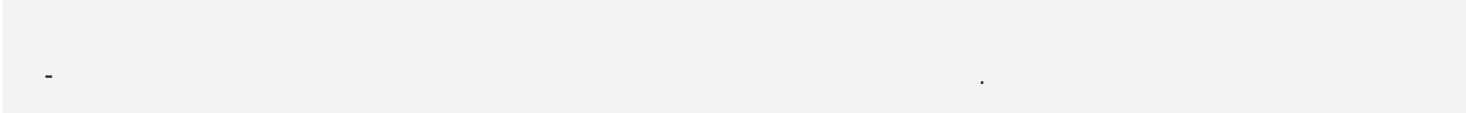
- 2)
- 가)
-)
-)

- 3)
- 가)
-)
-)
-)

- 4)
- 가)
-)
-)
-)
-) .
-)

- 5) .
- 가)
-)

- 6)
- 가)
-)
-)
-)



1.

• • , , , 53
, , ,

가

	SKT		-
DB		/	
/		, , , , , , , ,	

가DB		가/ ,	
DB		/ / ,	

		가 가 ()	
		,	
	SKT		-
/		, , , , , , , ,	

DB		/	/

			/
			/

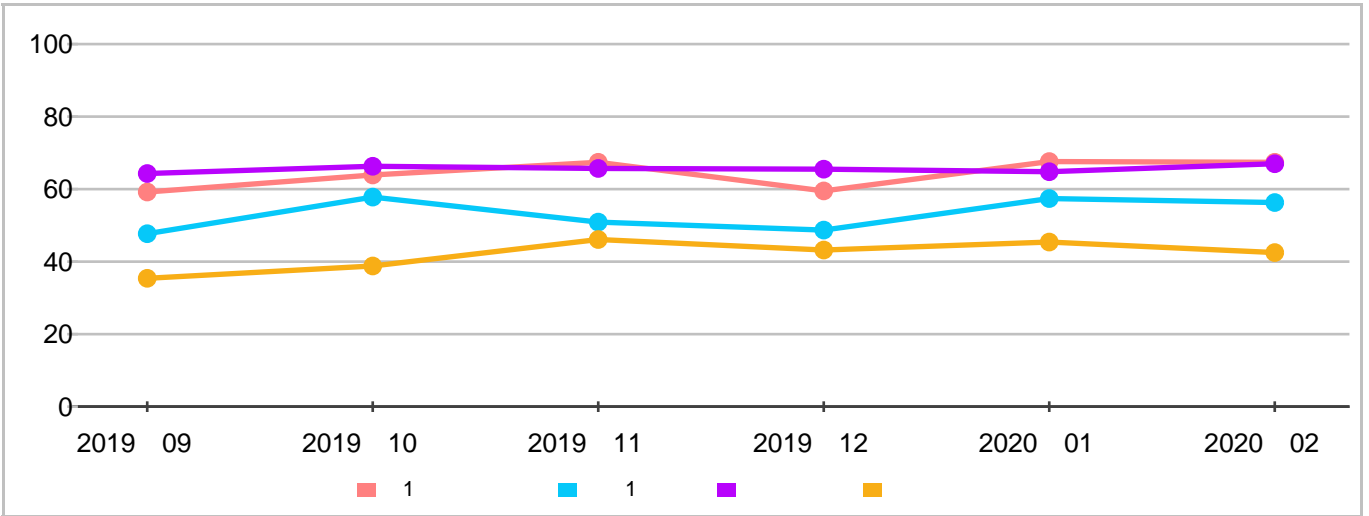
/			
/		, , , , , , , ,	

가

- : 1644-5302
 (09:00 ~ 18:00 /)

1. 가
(가 , , 가 , /)

2. 가



	2019 09	2019 10		2019 11		2019 12		2020 01		2020 02	
	가	가		가		가		가		가	
1	59.2	63.9	7.94%	67.4	5.48%	59.5	-11.72%	67.6	13.61%	67.4	-0.3%
1	47.7	57.8	21.17%	50.9	-11.94%	48.7	-4.32%	57.4	17.86%	56.3	-1.92%
	64.3	66.3	3.11%	65.7	-0.9%	65.5	-0.3%	64.8	-1.07%	67.0	3.4%
	35.4	38.8	9.6%	46.1	18.81%	43.2	-6.29%	45.4	5.09%	42.5	-6.39%

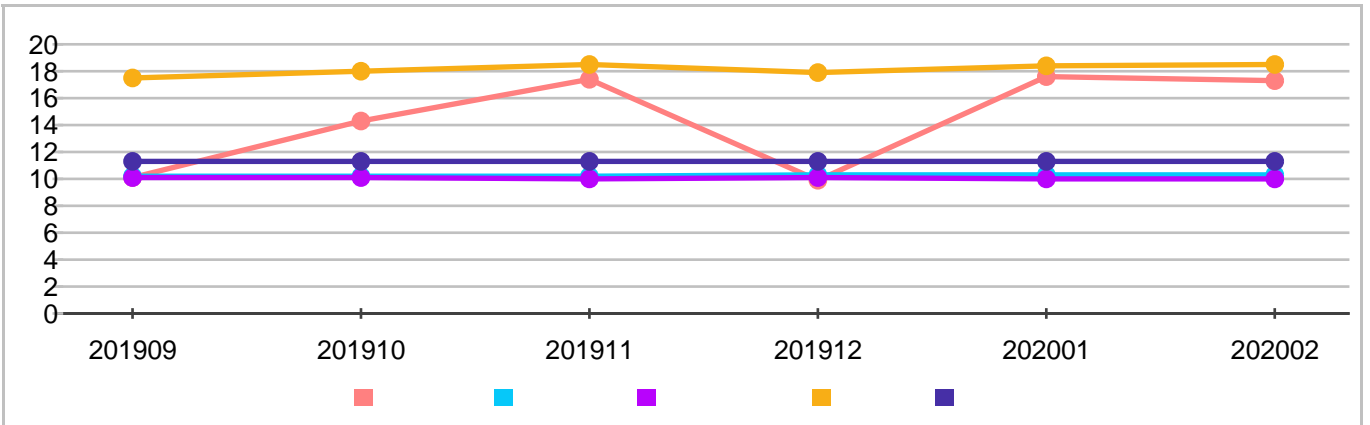
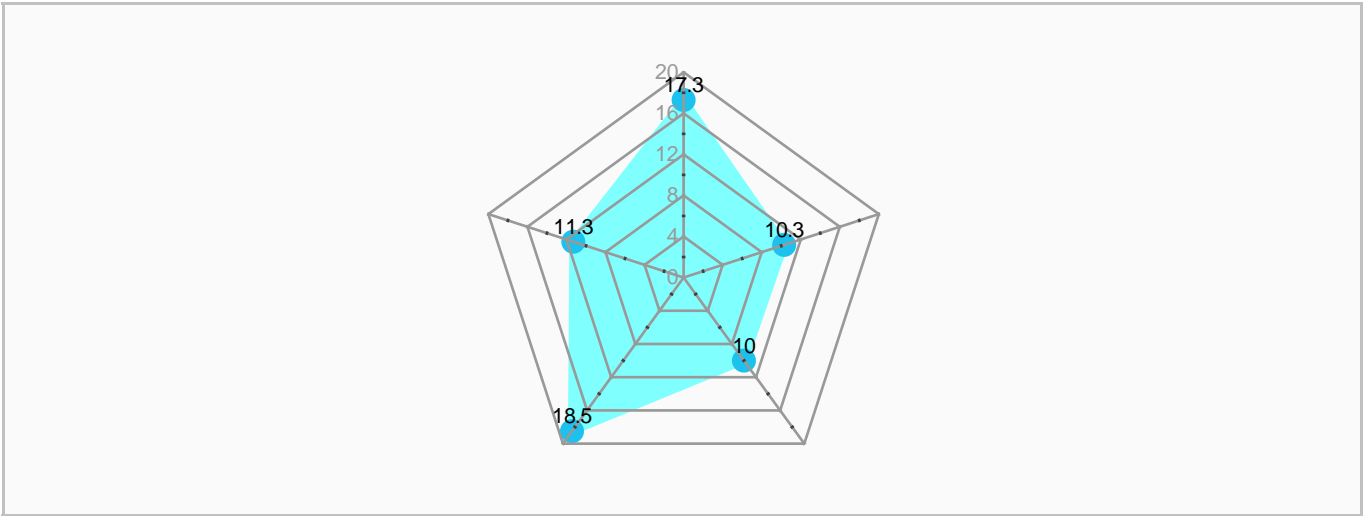
• 1 가 : , , , 가1 가
가 : , , (1~5)
가 : , , , 가1 가

가 : , , , 가1 가
(1~5)

가	1	2	3	4	5
가	70	57.5~70	45~57.5	32.5~45	32.5

3. 가

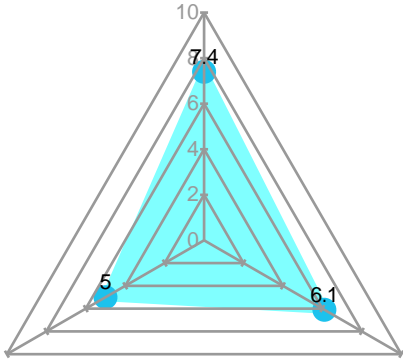
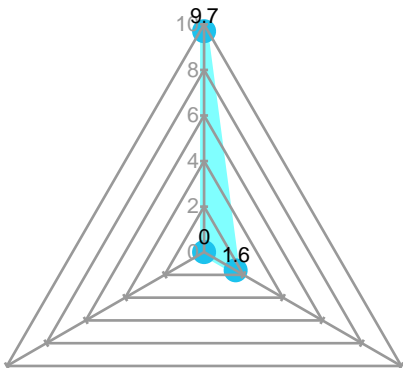
. 1



• 1 5 가 , .

• 0.54% , -1.70% , 0.00% , 0.00% ,
0.00%

(20)	17.3		(10)	7.6	- (5) - 가 (5)
			(5)	4.7	-
			(5)	5.0	- 1
			.		
(20)	10.3		(10)	0.3	- 12 (5) - 12 (5)
			(5)	5.0	-
			/ (5)	5.0	- 1 가 /
			.		
(20)	10.0		(10)	10.0	- () / () - () / ()
			(5)	0.0	-
			(5)	0.0	- (2) - (1.5) - (1.5)
			.		

(20)	18.5		(7.5)	7.4	-
			(7.5)	6.1	-
			(5)	5.0	-
(20)	11.3		(10)	9.7	-
			(5)	1.6	-
			(5)	0.0	-
	67.4				

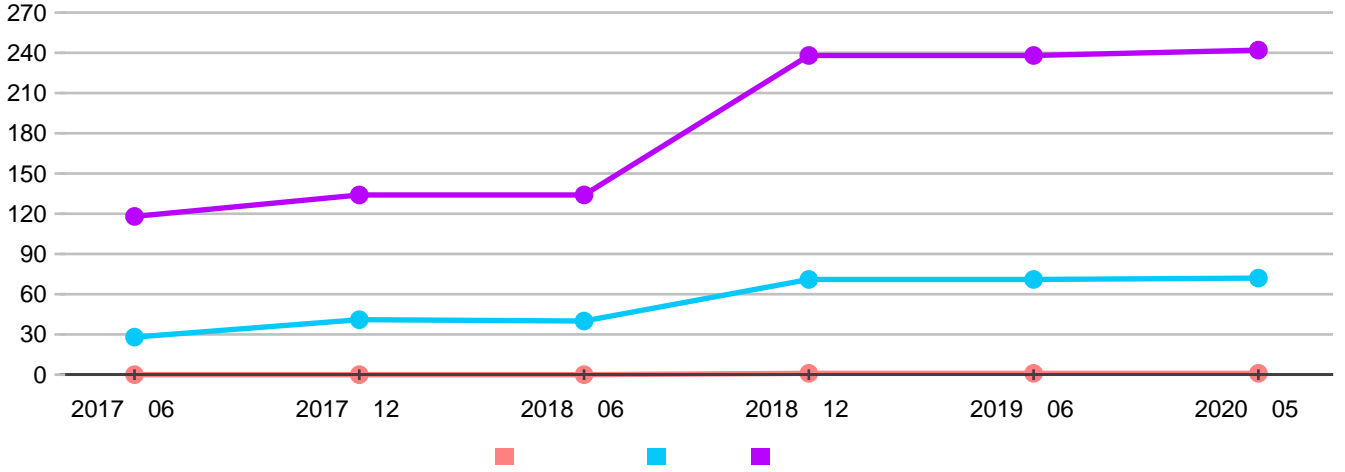
2.

/ . , / .

2.

1.

. 1



	2017 06		2017 12		2018 06		2018 12		2019 06		2020 05	
	Value	%	Value	%	Value	%	Value	%	Value	%	Value	%
	0	0.00%	0	0.00%	0	0.00%	1	-	1	0.00%	1	0.00%
	28	46.43%	41	-2.44%	40	77.5%	71	77.61%	71	0.00%	72	1.41%
	118	13.56%	134	0.00%	134	77.61%	238	0.00%	238	0.00%	242	1.68%

- 1 0%
- 1.41% 가
- 1.68% 가

TIP

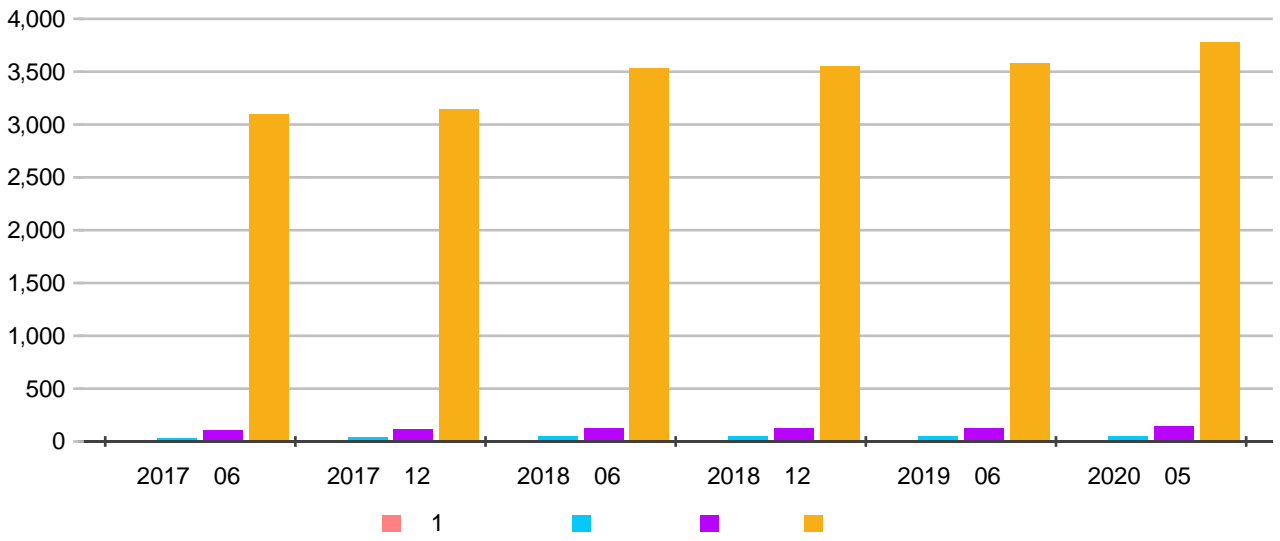
가

(,) , 가

가

2.

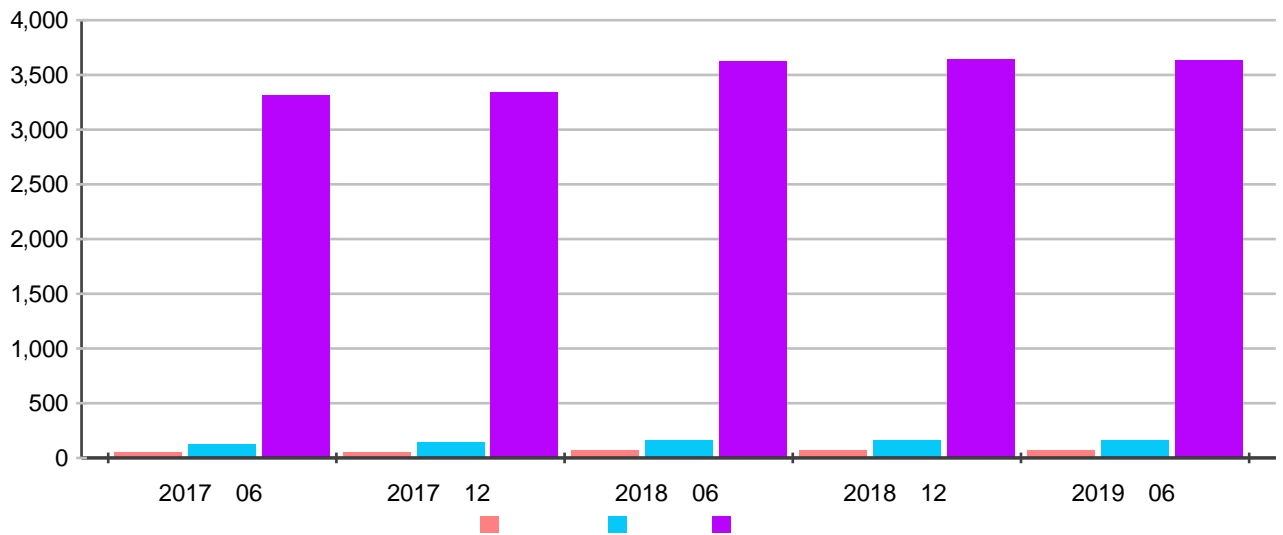
· 1 -



	2017 06		2017 12		2018 06		2018 12		2019 06		2020 05	
1	0	0	0.00%	0	0.00%	1	-	1	0.00%	1	0.00%	
	35	45	28.57%	48	6.67%	48	0.00%	48	0.00%	53	10.42%	
	107	120	12.15%	132	10%	132	0.00%	132	0.00%	147	11.36%	
	3,104	3,149	1.45%	3,532	12.16%	3,555	0.65%	3,581	0.73%	3,783	5.64%	

· 1	1	0%	·
·	53	10.42%	가
·	147	11.36%	가
·	3,783	5.64%	가

· 2 -



	2017 06	2017 12		2018 06		2018 12		2019 06		2020 05	
	47	54	14.89%	64	18.52%	64	0.00%	64	0.00%	61	-4.69%
	121	139	14.88%	156	12.23%	156	0.00%	156	0.00%	153	-1.92%
	3,310	3,343	1%	3,627	8.5%	3,643	0.44%	3,629	-0.38%	3,609	-0.55%

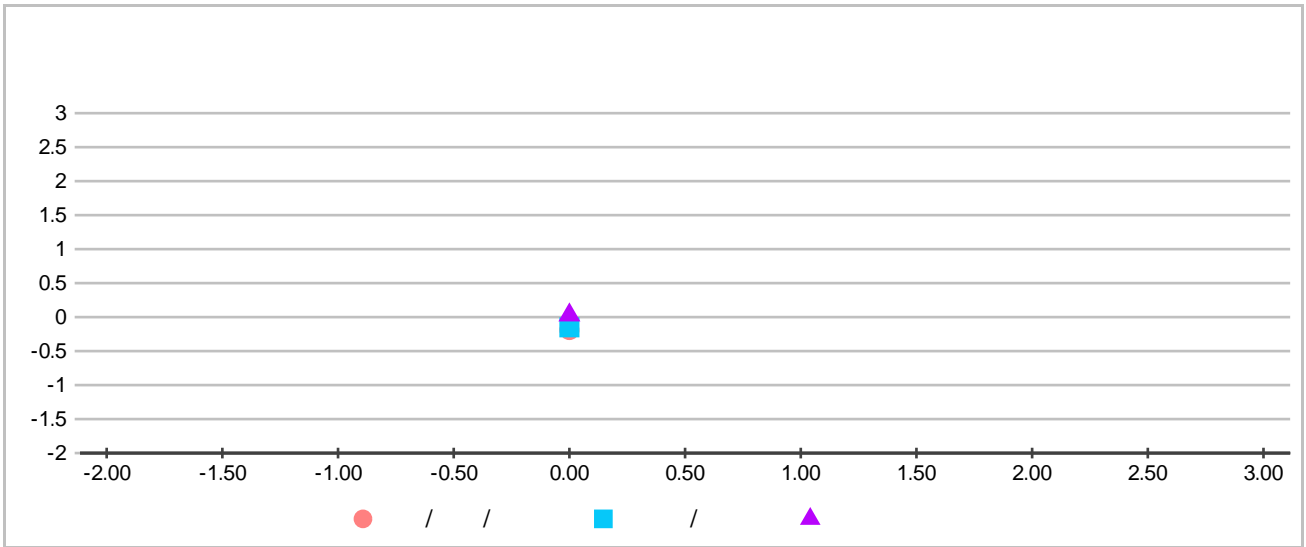
. 61 -4.69%
 . 153 -1.92%
 . 3,609 -0.55%

TIP .

. . .

. . .

3.



	(가/ 가)		가 가
	(/ 가)		/
	(/)	/ / , /	가
	(가/)		가 가

TIP . 가 / ,

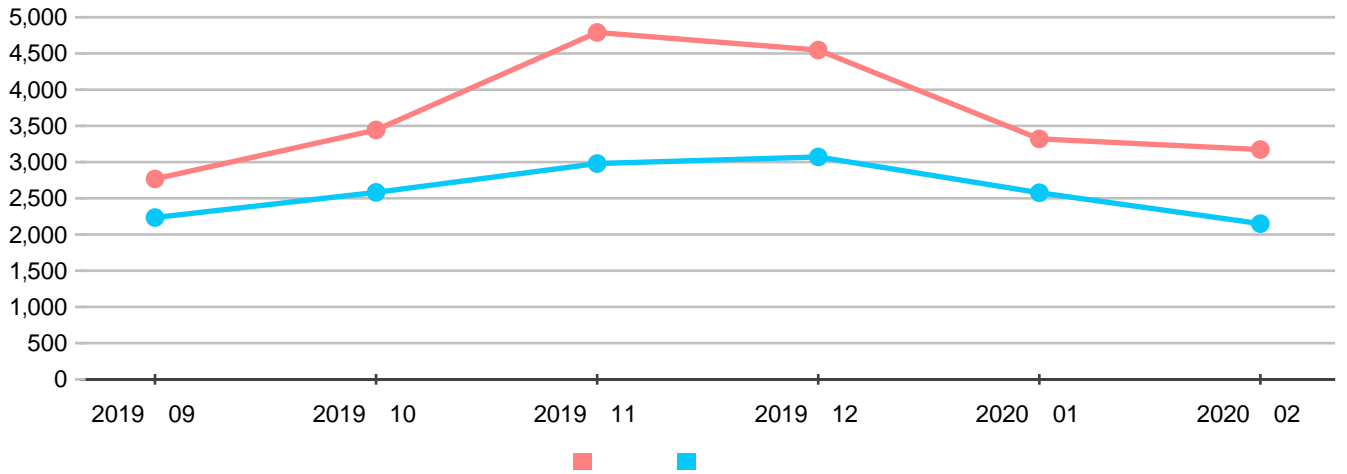
3.

(,), (가) ,
(,) ,
:

3.

1.

. 1



(: ,)

		2019 09		2019 10		2019 11		2019 12		2020 01		2020 02	
		/	/	/	/	/	/	/	/	/	/	/	
		2,768	3,444	24.42%	4,790	39.08%	4,547	-5.07%	3,321	-26.96%	3,173	-4.46%	
		582	653	12.2%	703	7.66%	657	-6.54%	551	-16.13%	598	8.53%	
		2,234	2,582	15.58%	2,980	15.41%	3,071	3.05%	2,577	-16.09%	2,150	-16.57%	
		943	1,002	6.26%	952	-4.99%	999	4.94%	965	-3.4%	854	-11.5%	

TIP

6

가

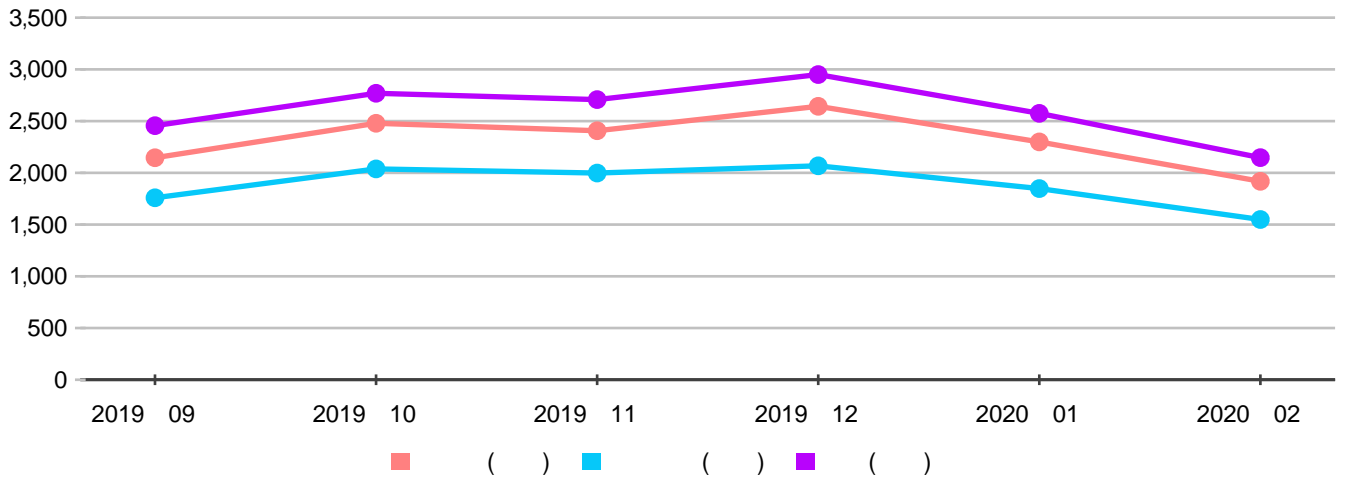
(,)

가

(,)

2.

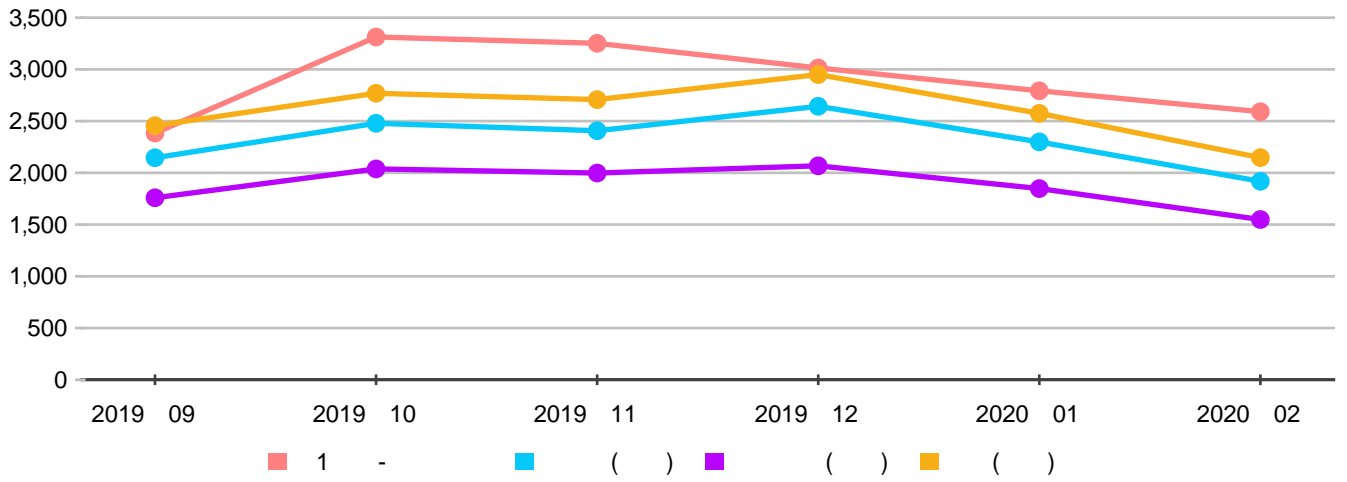
. 1



(: ,)

		2019 09		2019 10		2019 11		2019 12		2020 01		2020 02	
		/	/	/	/	/	/	/	/	/	/	/	/
()		2,146	2,479	15.52%	2,407	-2.9%	2,643	9.8%	2,299	-13.02%	1,918	-16.57%	
		568	666	17.25%	635	-4.65%	644	1.42%	586	-9.01%	503	-14.16%	
()		1,759	2,038	15.86%	1,998	-1.96%	2,068	3.5%	1,848	-10.64%	1,549	-16.18%	
		445	518	16.4%	498	-3.86%	485	-2.61%	451	-7.01%	393	-12.86%	
()		2,456	2,769	12.74%	2,708	-2.2%	2,950	8.94%	2,575	-12.71%	2,147	-16.62%	
		674	764	13.35%	728	-4.71%	732	0.55%	676	-7.65%	588	-13.02%	

- () 1,918 503 -16.57% , -14.16%
- () 1,549 393 -16.18% , -12.86%
- () 2,147 588 -16.62% , -13.02%



(: ,)

		2019 09		2019 10		2019 11		2019 11		2020 01		2020 02	
		/	/	/	/	/	/	/	/	/	/	/	/
1 -		2,384	3,313	38.97%	3,252	-1.84%	3,014	-7.32%	2,793	-7.33%	2,591	-7.23%	
		1,061	1,451	36.76%	1,443	-0.55%	1,311	-9.15%	1,228	-6.33%	1,129	-8.06%	
()		2,146	2,479	15.52%	2,407	-2.9%	2,643	9.8%	2,299	-13.02%	1,918	-16.57%	
		568	666	17.25%	635	-4.65%	644	1.42%	586	-9.01%	503	-14.16%	
()		1,759	2,038	15.86%	1,998	-1.96%	2,068	3.5%	1,848	-10.64%	1,549	-16.18%	
		445	518	16.4%	498	-3.86%	485	-2.61%	451	-7.01%	393	-12.86%	
()		2,456	2,769	12.74%	2,708	-2.2%	2,950	8.94%	2,575	-12.71%	2,147	-16.62%	
		674	764	13.35%	728	-4.71%	732	0.55%	676	-7.65%	588	-13.02%	

· 1 -	2,591	1,129	-7.23%	, -8.06
%				
· ()	1,918	503	-16.57%	, -14.16%
· ()	1,549	393	-16.18%	, -12.86%
· ()	2,147	588	-16.62%	, -13.02%

TIP

- ,

가 , (,)

- (,) 가
- 가 () (, , 가)
-

3.

TIP

- / /

-

4.

TIP : / .

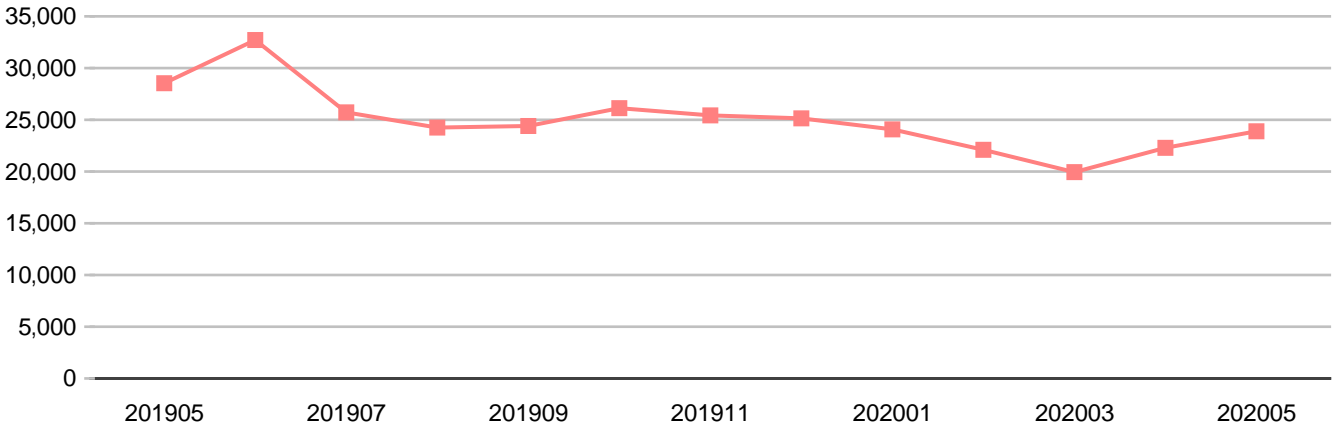
: . 가 .

4.

(), /가 , / , .

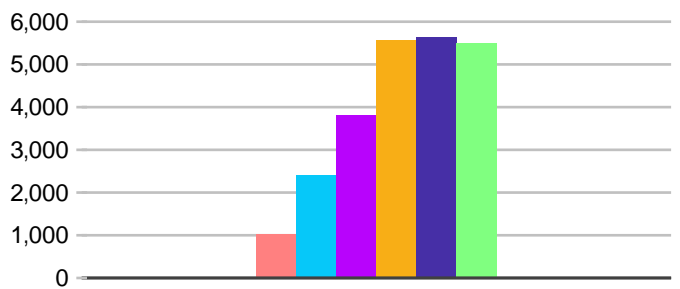
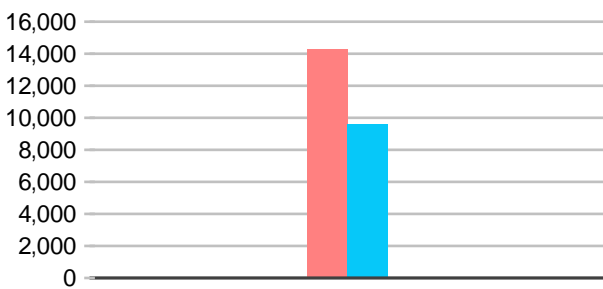
4.

1.



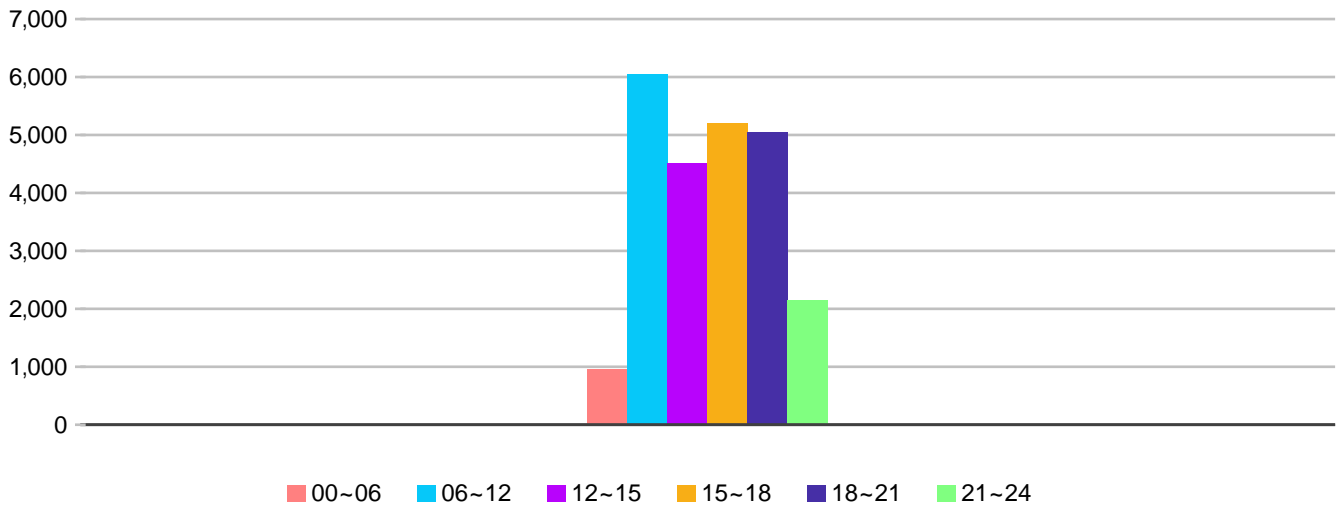
	201905	201906	201907	201908	201909	201910	201911	201912	202001	202002	202003	202004	202005
	28,537	32,712	25,721	24,250	24,403	26,126	25,428	25,141	24,076	22,101	19,943	22,292	23,891
	-	14.63%	-21.37 %	-5.72%	0.63%	7.06%	-2.67%	-1.13%	-4.24%	-8.20%	-9.76%	11.78%	7.17%

/



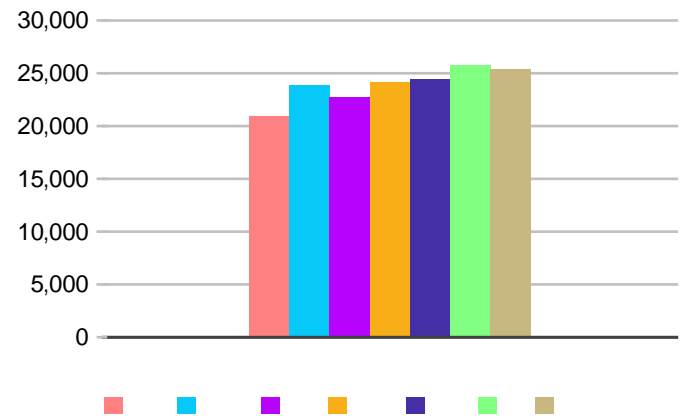
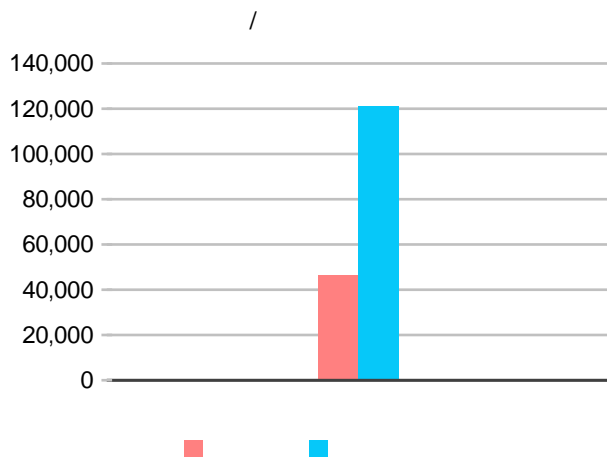
■ 10 ■ 20 ■ 30 ■ 40 ■ 50 ■ 60

			10	20	30	40	50	60		
		23,890	14,279	9,611	1,027	2,389	3,799	5,566	5,638	5,495
			59.8%	40.2%	4.3%	10%	15.9%	23.3%	23.6%	23.0%



		00 ~ 06	06 ~ 12	12 ~ 15	15 ~ 18	18 ~ 21	21 ~ 24
	23,890	956	6,044	4,515	5,208	5,041	2,150
		4.0%	25.3%	18.9%	21.8%	21.1%	9.0%

/ ,



		/								
		46,281	120,874	20,914	23,876	22,717	24,127	24,405	25,749	25,367
		27.7%	72.3%	12.5%	14.3%	13.6%	14.4%	14.6%	15.4%	15.2%

· 1 23,890 , 59.8%, 50 가 23.6%

· 1 06-12 25.3% 가 , 00-06 4.0% 가

· 1 15.4% 가 가 , 12.5% 가

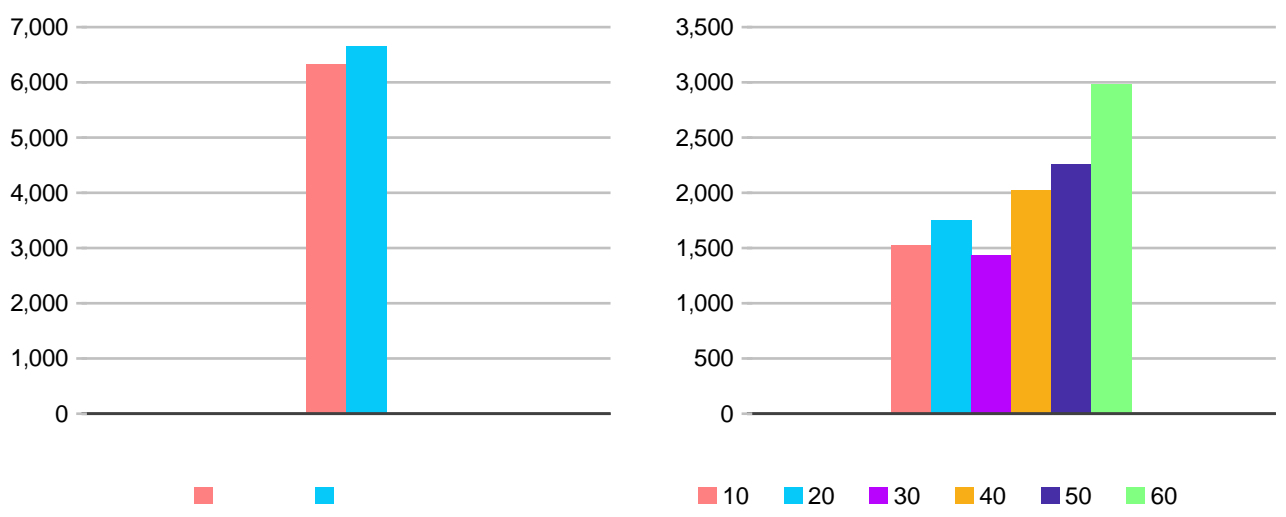
50M ,

가 (785,398m²)

500M,

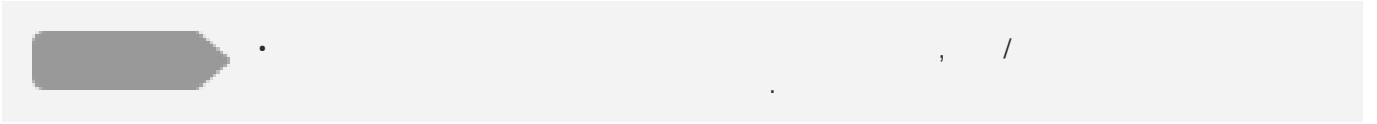
500M 가

2.

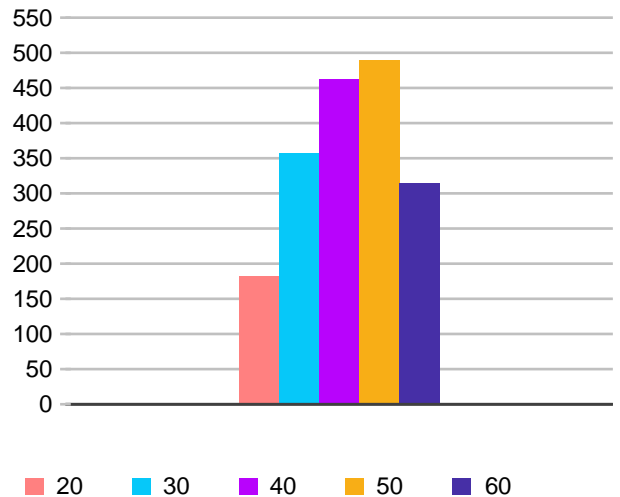
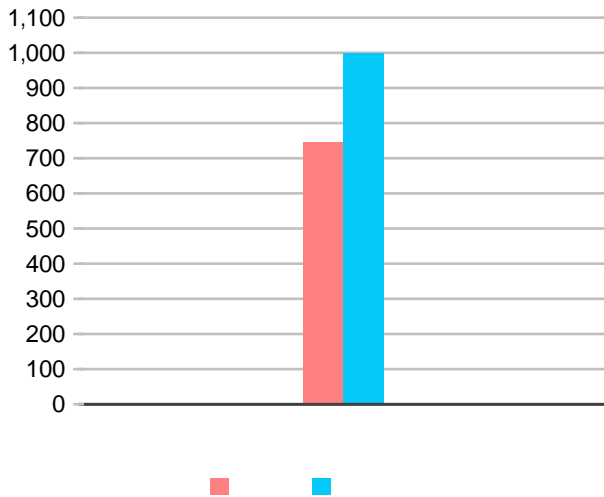


	가											
					10	10	20	30	40	50	60	
	5,312	12,976	6,328	6,648	992	1,527	1,754	1,431	2,025	2,262	2,984	
	100%	100%	48.8%	51.2%	7.6%	11.8%	13.5%	11.0%	15.6%	17.4%	23.0%	

· 1 12,976 , 51.2%, 60 가 23%



3.

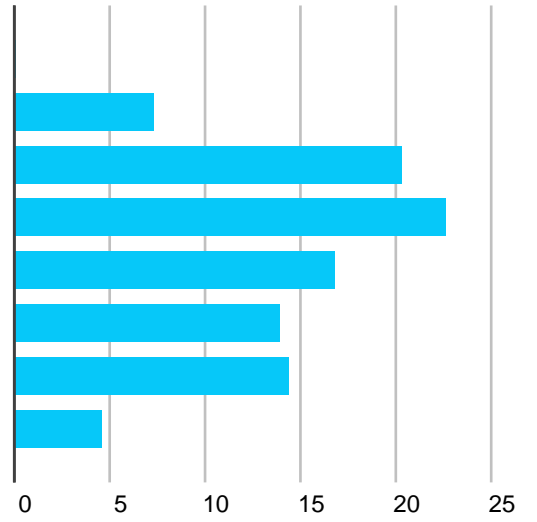


					20	30	40	50	60
		1,745	746	999	182	357	463	490	315
		100.0%	42.8%	57.3%	10.4%	20.5%	26.5%	28.1%	18.1%

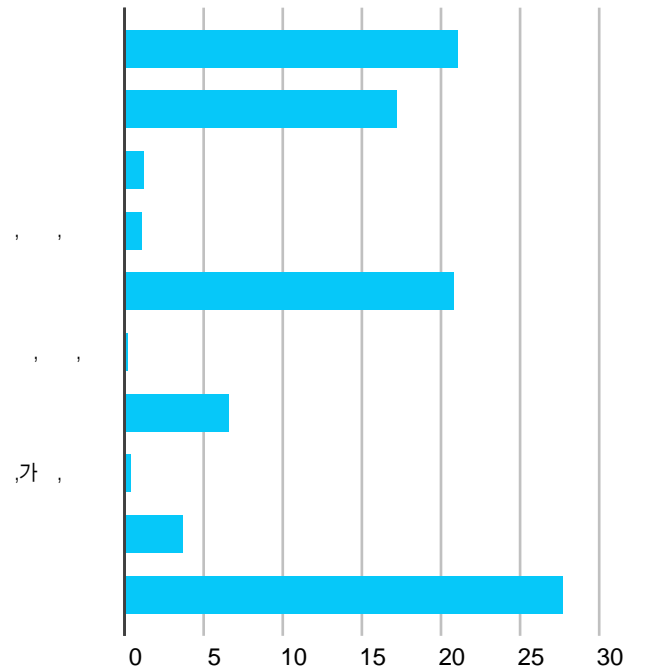
· 1 1,745 , 57.3% 50 가 28.1%

4.

	4.6 %
	14.4 %
, ,	13.9 %
	16.8 %
	22.6 %
	20.3 %
	7.3 %
	0.1 %



	27.7 %
	3.7 %
,가 ,	0.4 %
	6.6 %
,	0.2 %
	20.8 %
, ,	1.1 %
	1.2 %
	17.2 %
	21.1 %



가 27.7% 가 0.1%, , 22.6% 0.2%

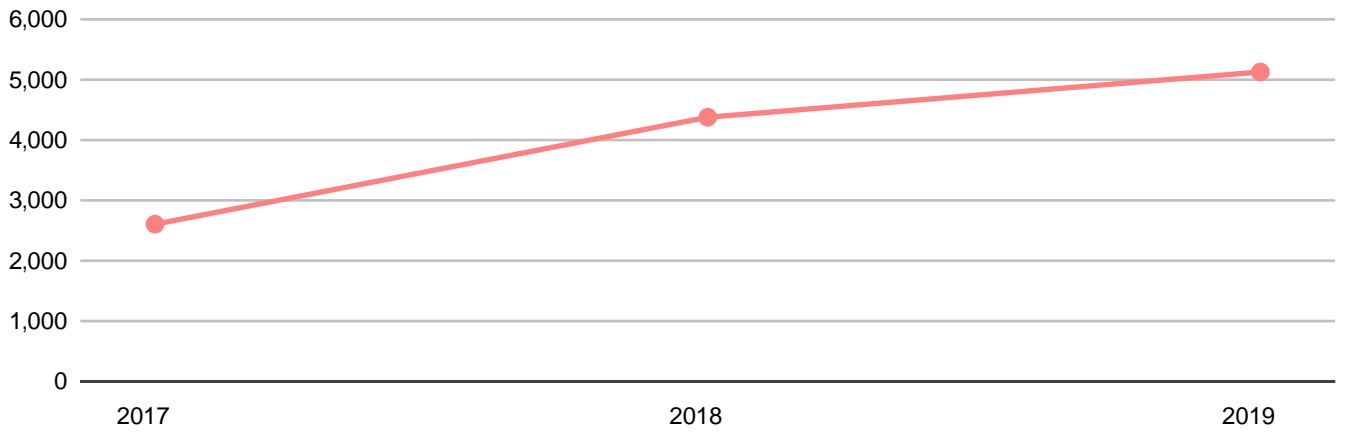
Tip

가

5.

		가		
		5,312	5,128	184
		100%	96.5%	3.5%

/



	2017		2018		2019	
	34	2,606	58	4,378	68	5,128

		~300	300~500	500~1,000	1,000~1,500	1,500~2,000	2,000
		9	2	4	0	0	0
		60.0%	13.3%	26.7%	0.0%	0.0%	0.0%

		66㎡	66㎡	99㎡	132㎡	165㎡
		3,647	1,206	275	0	0
		71.1%	23.5%	5.4%	0.0%	0.0%

		1	1	2	3	4	5	6
		4,424	704	0	0	0	0	0
	가	86.3%	13.7%	0.0%	0.0%	0.0%	0.0%	0.0%

Tip . , 가 , 가 가 , 가 가 가 . 가 가 가 . 가 가 가 .

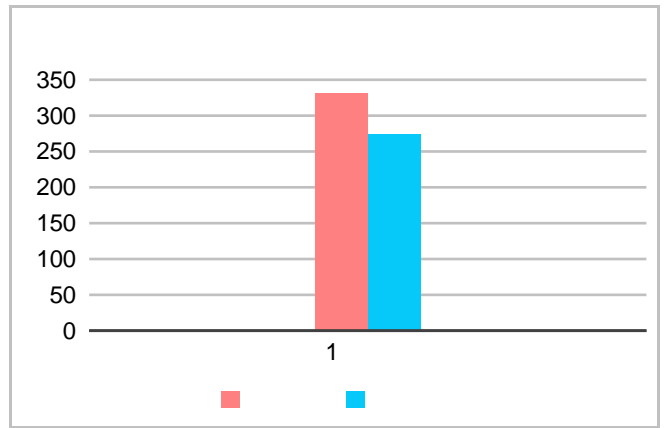
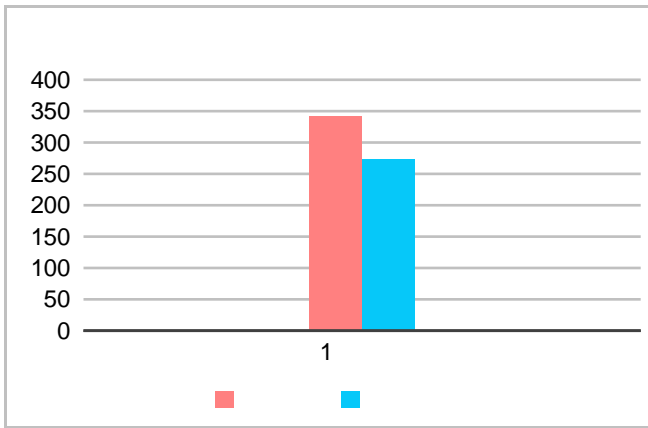
5. .

5.

1	, 1

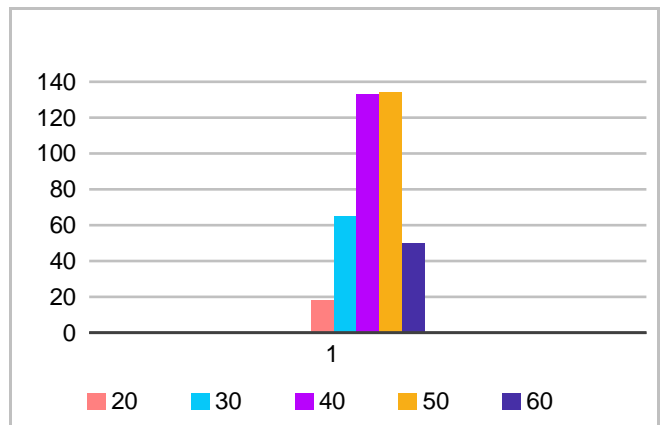
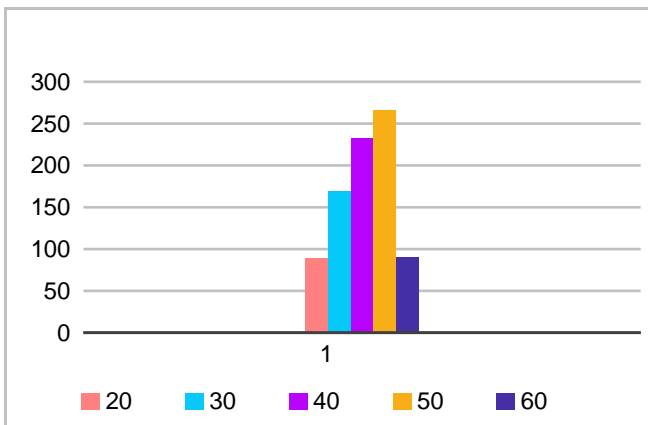
1.

(: , /)



		2019	2019	2019	2019
1		337 ~ 391	316 ~ 368	317 ~ 369	306 ~ 356
		258 ~ 300	253 ~ 295	250 ~ 290	253 ~ 295

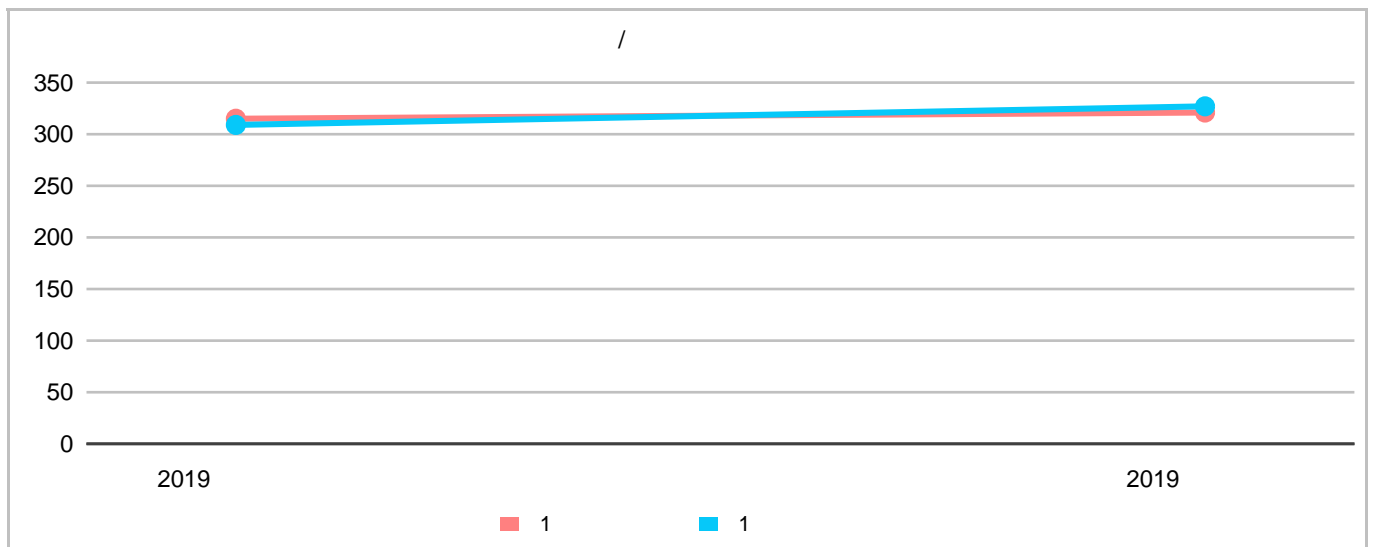
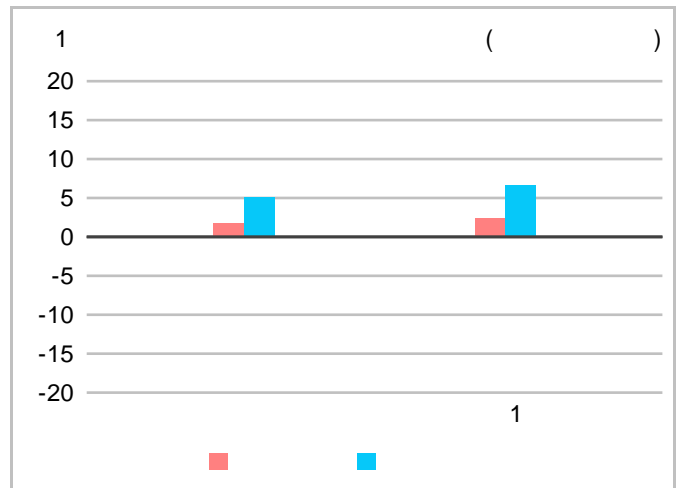
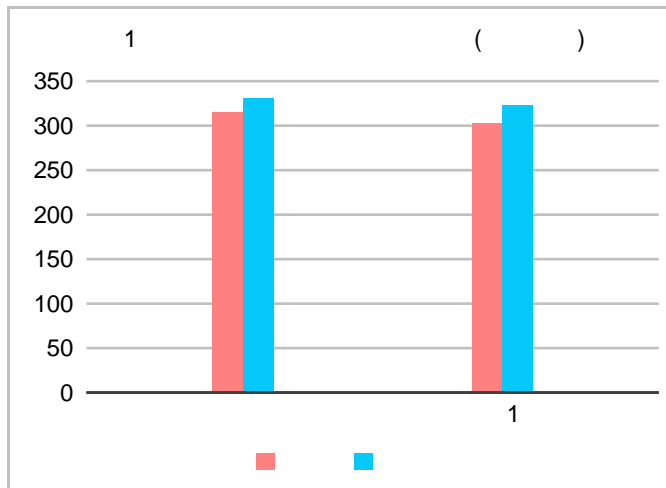
(: , /)



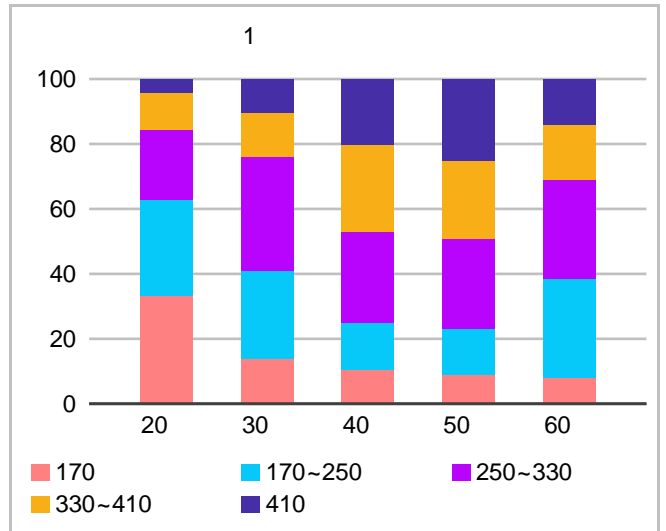
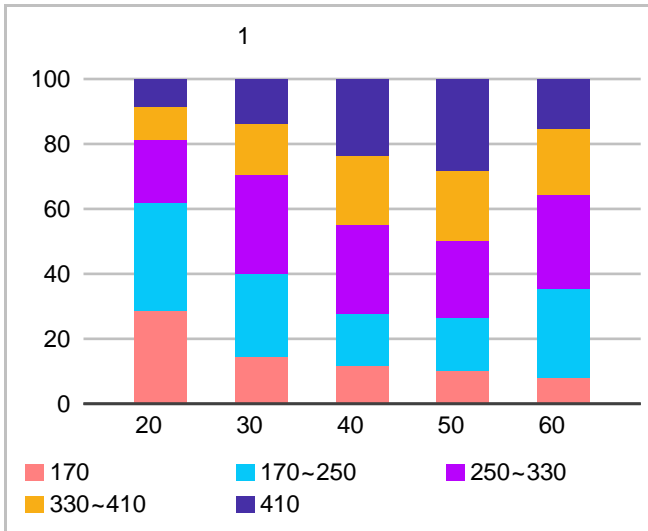
		2019	2019	2019	2019
--	--	------	------	------	------

1	20	184 ~ 214	82 ~ 96	173 ~ 201	17 ~ 19
	30	273 ~ 317	156 ~ 182	260 ~ 302	60 ~ 70
	40	329 ~ 383	216 ~ 250	315 ~ 366	123 ~ 143
	50	350 ~ 406	246 ~ 286	326 ~ 378	124 ~ 144
	60	283 ~ 329	83 ~ 97	270 ~ 314	46 ~ 54

(: , /)



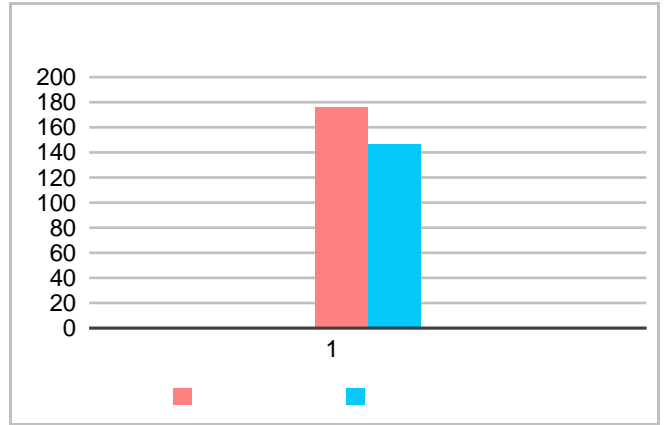
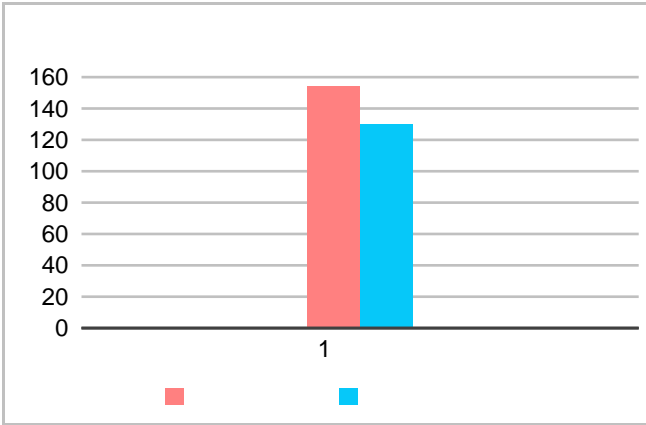
		2019		2019	
		2019	2019	2019	2019
1		316 ~ 368	322 ~ 374	291 ~ 339	306 ~ 356
	1	266 ~ 310	273 ~ 317	280 ~ 326	299 ~ 347



		()					()				
		20	30	40	50	60	20	30	40	50	60
1	170	28.6%	14.4%	11.7%	10.1%	8%	33.3%	13.7%	10.4%	9%	8%
	170~250	33.3%	25.7%	16%	16.4%	27.5%	29.5%	27.2%	14.5%	14.2%	30.4%
	250~330	19.4%	30.3%	27.3%	23.8%	28.7%	21.4%	35%	28.1%	27.4%	30.4%
	330~410	10.3%	16%	21.3%	21.6%	20.5%	11.6%	13.6%	26.9%	24.2%	17.1%
	410	8.3%	13.6%	23.6%	28%	15.2%	4.2%	10.4%	20.1%	25.1%	14%

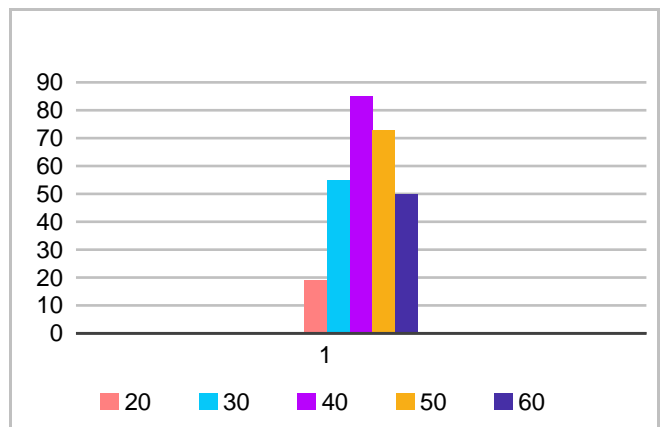
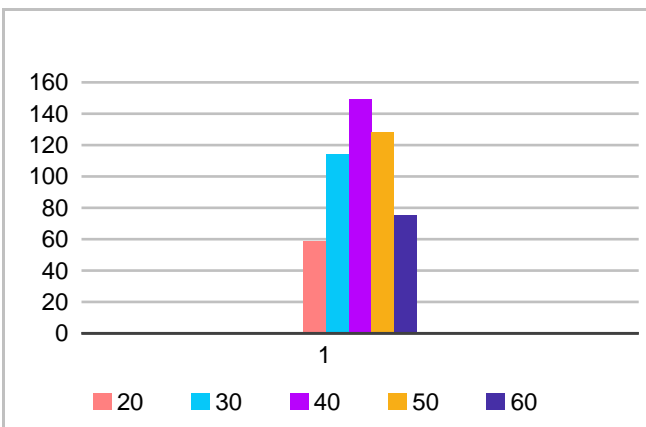
2.

(: , /)



		2019	2019	2019	2019
1		144 ~ 168	142 ~ 166	167 ~ 194	163 ~ 189
		121 ~ 141	120 ~ 140	137 ~ 159	135 ~ 157

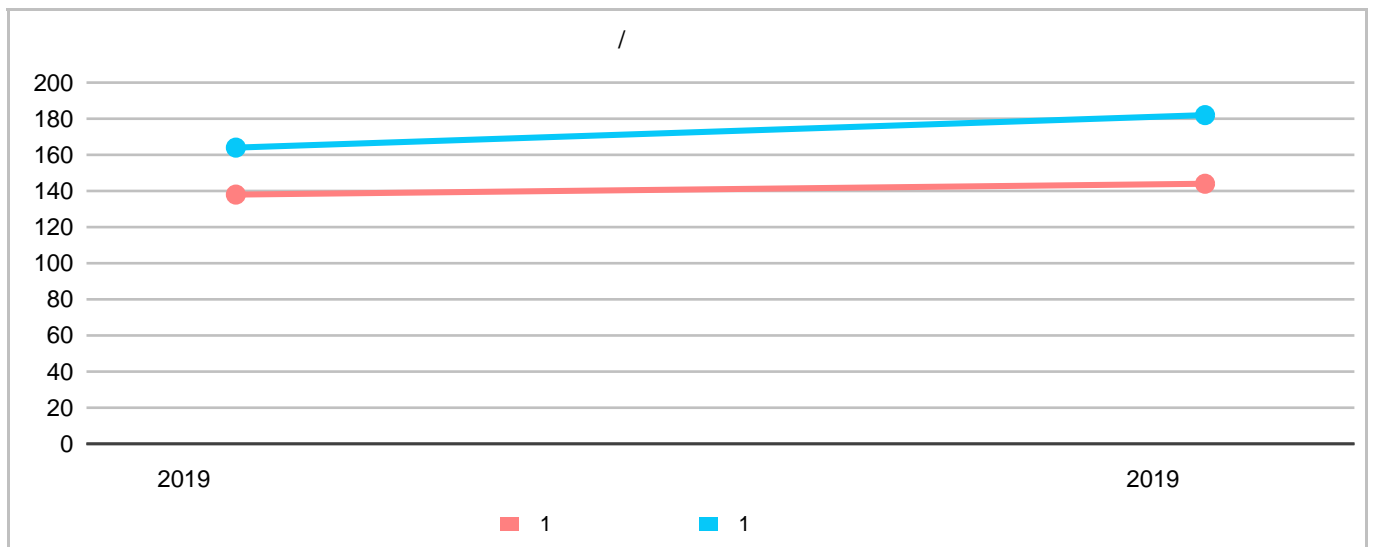
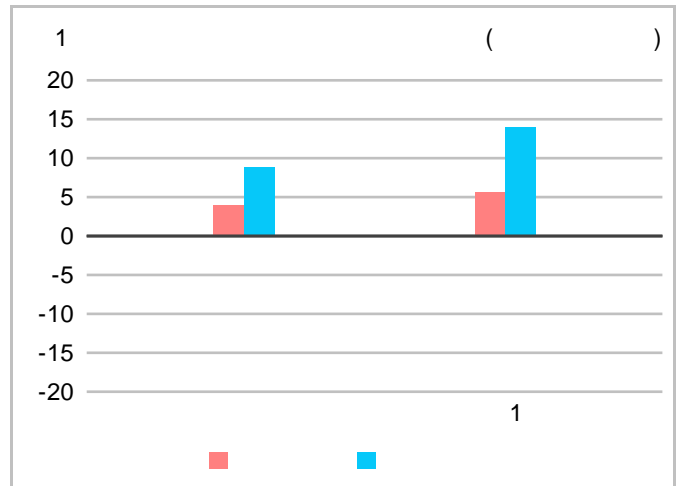
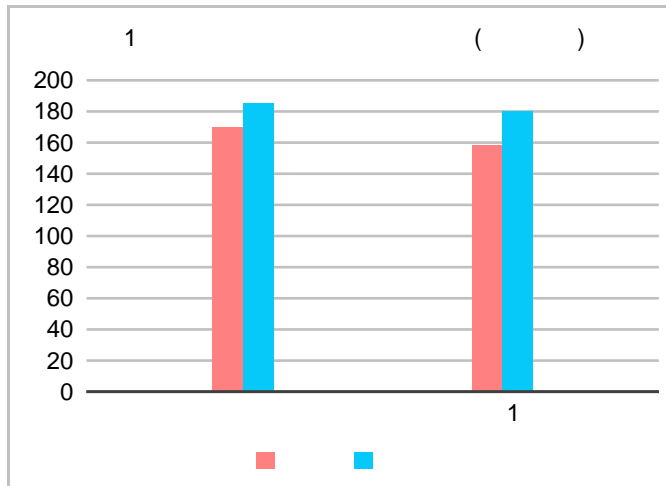
(: , /)



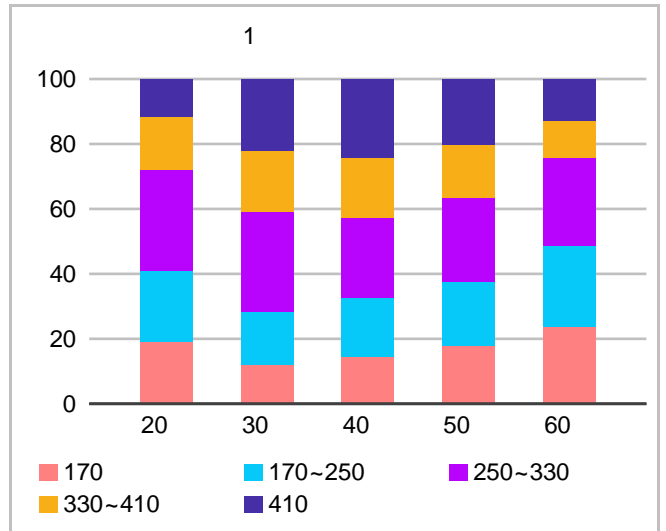
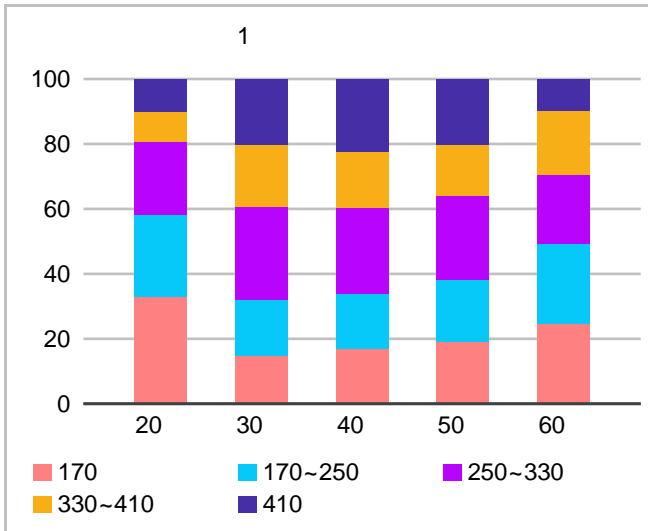
		2019	2019	2019	2019

1	20	73 ~ 85	55 ~ 63	109 ~ 127	18 ~ 20
	30	151 ~ 175	105 ~ 123	155 ~ 181	51 ~ 59
	40	180 ~ 210	138 ~ 160	191 ~ 223	79 ~ 91
	50	154 ~ 180	118 ~ 138	155 ~ 181	68 ~ 78
	60	95 ~ 111	69 ~ 81	105 ~ 123	46 ~ 54

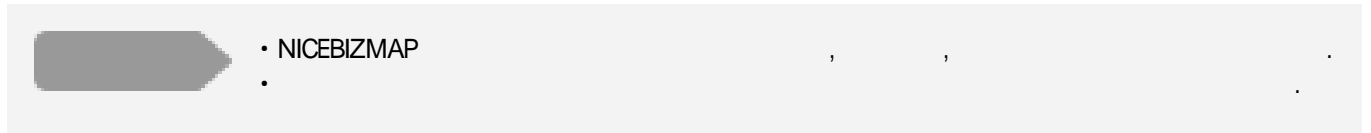
(: , /)



		2019		2019	
		2019	2019	2019	2019
1		140 ~ 162	145 ~ 169	157 ~ 183	171 ~ 199
	1	116 ~ 134	122 ~ 142	146 ~ 170	167 ~ 194



		()					()				
		20	30	40	50	60	20	30	40	50	60
1	170	33.1%	14.7%	16.9%	19.1%	24.7%	19.2%	11.9%	14.5%	17.8%	23.8%
	170 ~ 250	25.1%	17.4%	16.9%	19.1%	24.7%	21.7%	16.5%	18.1%	19.8%	24.8%
	250 ~ 330	22.5%	28.5%	26.6%	25.9%	20.9%	31%	30.5%	24.5%	25.7%	27.2%
	330 ~ 410	9.5%	19.2%	17.2%	15.5%	19.9%	16.5%	19.1%	18.7%	16.4%	11.4%
	410	9.9%	20.1%	22.4%	20.3%	9.7%	11.5%	22%	24.1%	20.2%	12.9%



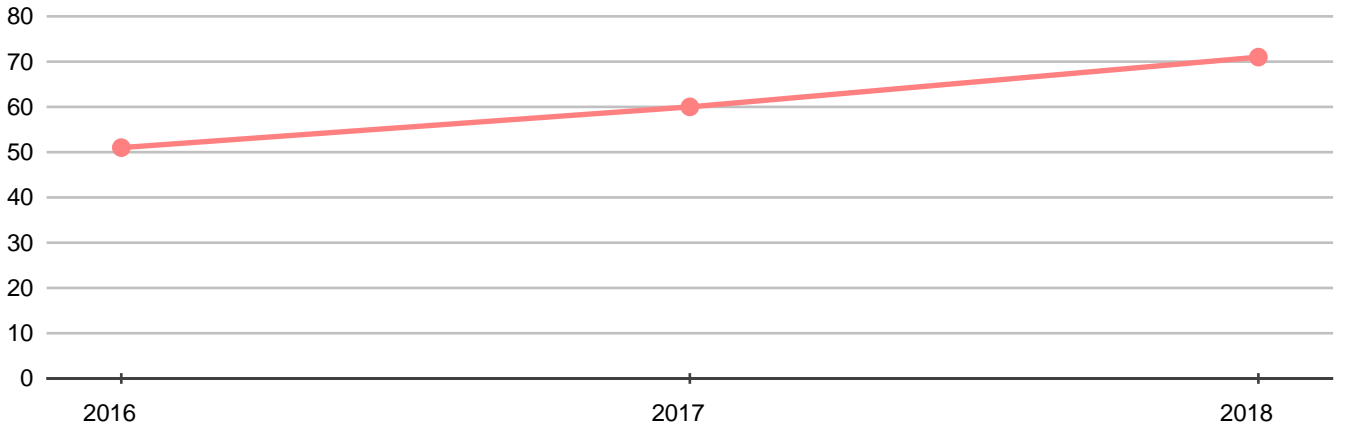
6.

가 , / , , .

6.

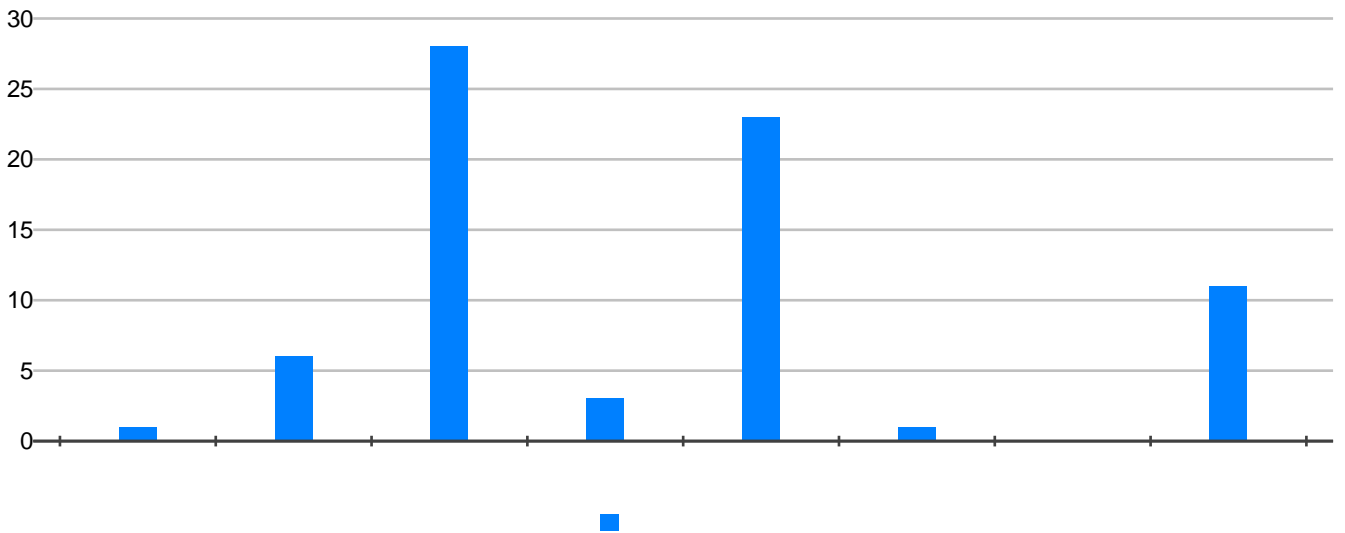
1.

: , 2019 12



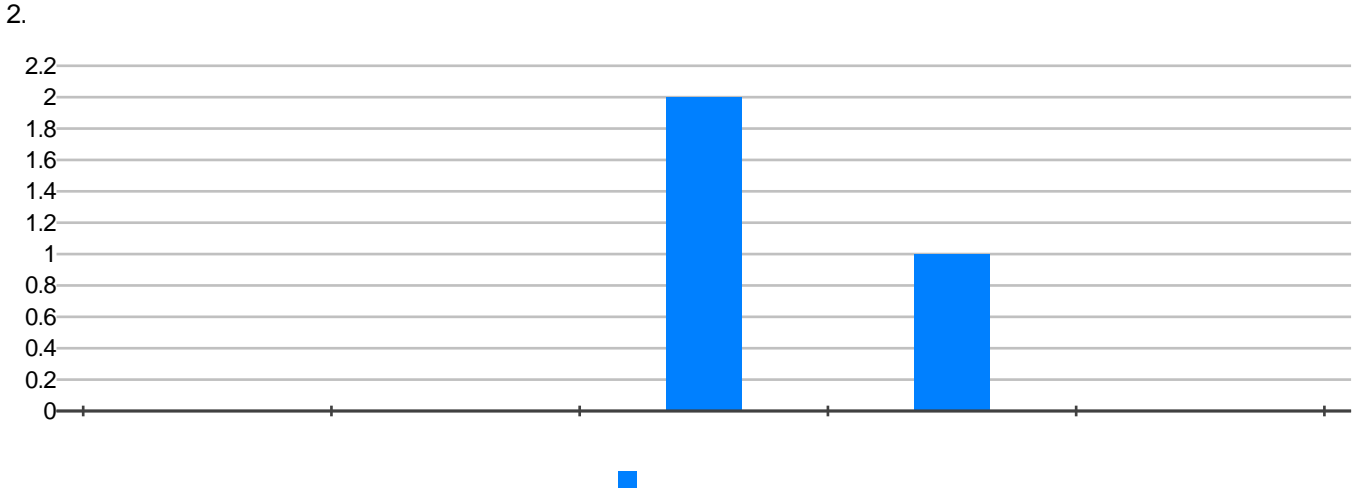
	2016	2017	2018
	51	60	71

: , 2019 12



	1	6	/	3	23	1	0	11
	1	6	28	3	23	1	0	11

가 / 가 , / 가 .



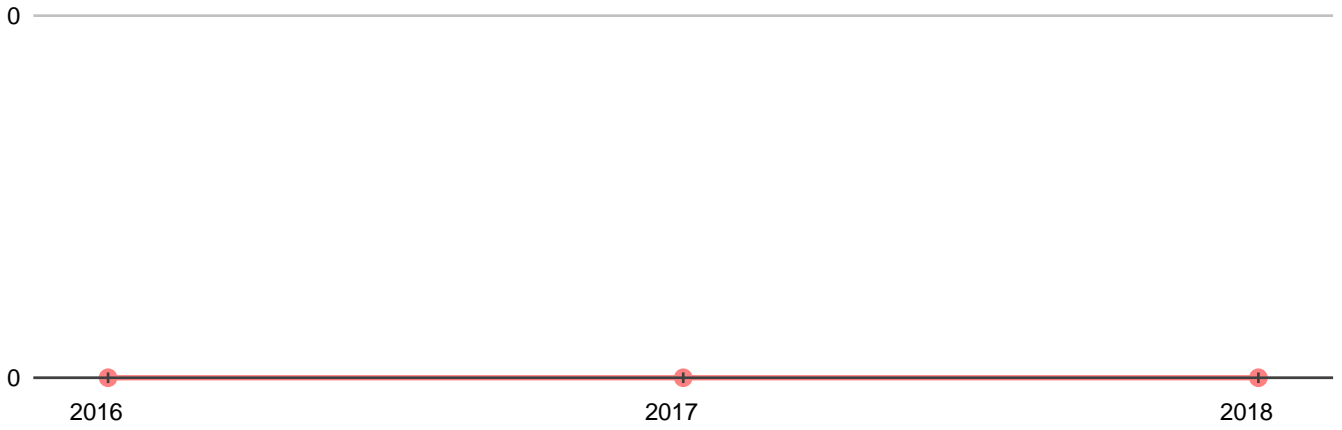
	()	()	()	()	()
	0(0)	0(0)	2(608)	1(633)	0(0)

TIP 가 가 . (, , , , ,)

3. : ,2019 12

		0	11

: ,2019 12



가 .			

TIP .

가 가 . 가